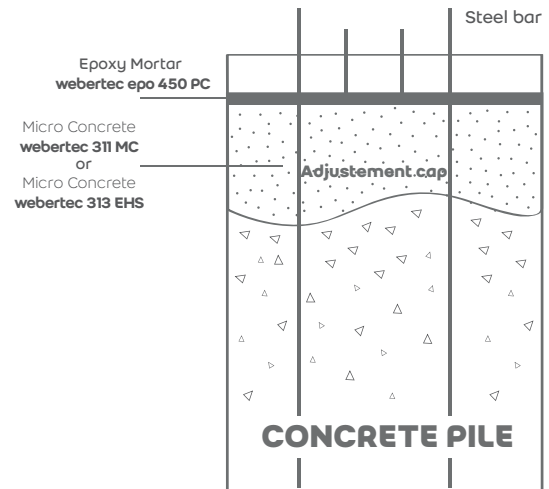


## Pile capping

This application is for repairing the pile head and to provide leveled and high strength capping. In the construction site and after finishing the piles work, the pile head exists normally with an un-even finishing and in order to continue with the construction work to the second stage and make a concrete slab, the pile head should be treated and on then add to the cap high concrete strength.



## Solution

### Recommended products



The cement and epoxy base products are ideal for this application. The pile head is to be treated before applying any of concrete repair products and the following steps are to be considered:

### Preparation of the surface

Remove dust, oil and any remainders by using fresh water only; all substrate must be sound and clean. All damaged and weak concrete must be removed. The concrete should be at least 28 days old.

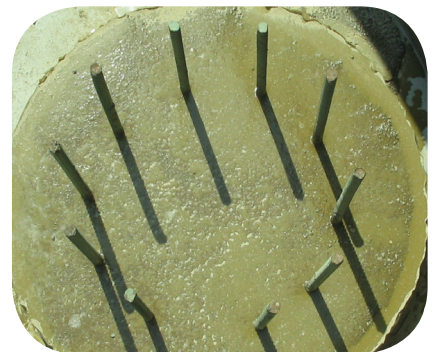


### Shuttering

The shuttering should be done on all sides of the pile and within enough heights to reach the slab level required (200- 100mm). After damping the shutter with fresh water, the pile is ready for two steps of applying concrete repair product cement base and the epoxy one as final layer.

### Adjustment cap

For the cap adjustment **webertec 311 MC** or **webertec 313 EHS** the three components cement-based product is to be used. Afterwards, mix the three components together with fresh water. The mixed products should be poured in the shuttering with thickness of 150-50 mm. Flow ability characteristic of the product will enable a self-leveling action and the help with steel trowel is always recommended. The finished product is to be covered with polyethylene sheet for 24 hours before applying the second step of the system.



### Final cap

For the cap adjustment **webertec epo 430 GRT plus** / **webertec epo 450 PC** (the three components epoxy-based product) is to be used. After mixing the three components together and in order to obtain a uniform epoxy mortar, add the graded aggregates (part C) to the epoxy fluid while mixing for 2 to 3 minutes. One full kit should be mixed and the application should be carried out in a fast manner. The mixed product is to be poured on a dry surface in the shuttering with thickness of 50 - 10 mm, on top of **webertec 311 MC** / **webertec 313 EHS**. The flow ability characteristic of the product will allow a self-leveling action and the help with steel trowel is always recommended. The finished product will be set within 5 - 2 hours.